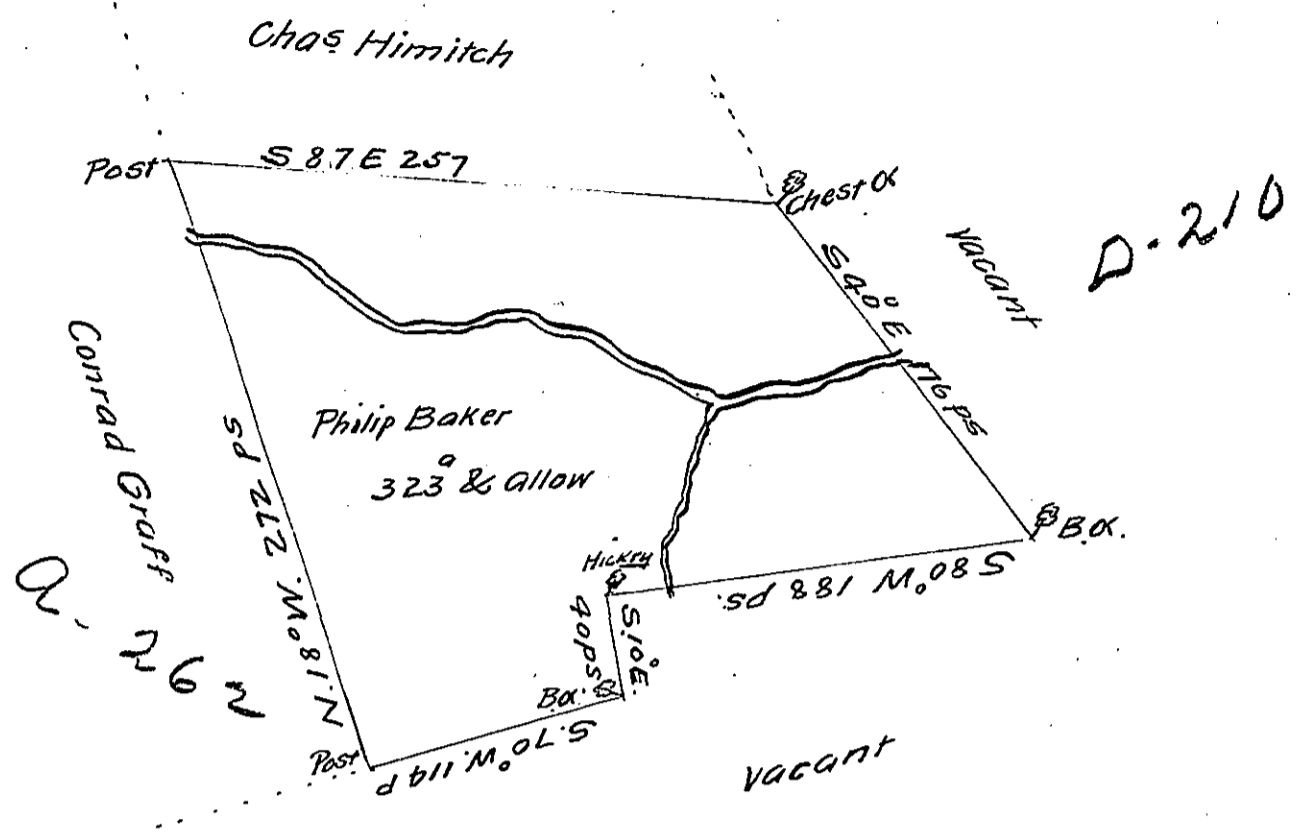


C - 310



A Draught of a tract of Land Called Bern situate on a run or brook which emptys into the Southerly side of the North East Branch of Susquehanna River about eight miles above Catawissey and about a mile & a half from the said Branch in the County of Northumberland Containing Three hundred & twenty three acres besides the usual allowance of 6 p cent for Roads & ste. Surveyed the 15th day of September 1773 for Philip Baker in pursuance of a warrant dated the 25th day of February 1773.

To John Lukens Esq^r by Chas Stewart D^y Sur^r
 Survey^r Gen^l

IN TESTIMONY that the above is a copy of the original remaining on file in the Department of Internal Affairs of Pennsylvania, made conformably to an Act of Assembly approved the 16th day of February, 1833, I have hereunto set my Hand and caused the Seal of said Department to be affixed at Harrisburg, this tenth day of September 1911

Henry Howell
 Secretary of Internal Affairs.